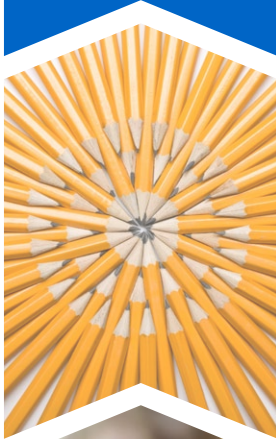


# SARC

2015-16  
School Accountability  
Report Card

Published in 2016-17



## Monroe Elementary School

Cesar Loya  
Principal  
cloya@ggusd.us

16225 Newhope Street  
Fountain Valley, CA 92708

Grades: K-6  
Phone: (714) 663-6264  
<http://monroe.ggusd.us>

CDS Code: 30-66522-6028484

To view the SARC in Spanish or  
Vietnamese, please visit:  
[www.ggusd.us](http://www.ggusd.us)

# Garden Grove USD



### School Description

Monroe Elementary is an open enrollment school which offers a Spanish Dual Immersion 90:10 program. We serve students from Fountain Valley, Santa Ana, Westminster and Garden Grove.

### School Safety

Maintaining a safe and orderly environment is essential to learning. All schools in the district are closed campuses, and visitors must immediately register in the school office before entering the campus. School access is monitored by administrators, teachers and other school staff.

All schools operate employee safety committees and maintain comprehensive school safety plans that are reviewed and updated annually at the beginning of the school year. It was most recently updated and reviewed with school staff in September 2016. The safety plans include such elements as emergency plans and procedures, Department of Homeland Security alert precautions, school rules and school dress codes.

School safety committees, consisting of certificated and classified staff, meet to address safety issues for students and employees. Earthquake safety procedures are distributed to all students and parents at the beginning of the school year. Fire drills are conducted monthly at each elementary school, no fewer than four times per year at each intermediate school and at least twice a year at each high school. Drop drills are held quarterly at each elementary school and at least once each semester at intermediate and high schools. All schools conduct one lockdown exercise each year.

### Public Internet Access

Individuals without home Internet access can use computers with Internet connections at public libraries within the Garden Grove Unified School District to download and view School Accountability Report Cards. Access to the Internet at libraries is generally provided on a first-come, first-served basis. Other use restrictions include the hours of operation, the length of time that a workstation may be used (depending on availability), the types of software programs available on a workstation, and the ability to print documents.

See below for library contact information for your community.

**Orange County Public Library**  
Tel: (714) 566-3000  
www.ocpl.org

**Anaheim Public Library**  
Tel: (714) 765-1880  
www.anaheim.net/library

**Santa Ana Public Library**  
Tel: (714) 647-5250  
www.santa-ana.org/library

The Orange County Public Library serves the cities of Cypress, Fountain Valley, Westminster, Garden Grove and Stanton within the GGUSD.

### Professional Development

GGUSD's professional-development program centers on research-based effective instruction with embedded strategies to scaffold and differentiate for diverse learners. Teachers are supported in their implementation of effective instruction through extensive training and targeted in-class support. The use of student-achievement data also assists in providing clear goals and expectations for planning in-services for teachers and para-professionals.

Intensive workshops are conducted in late August and early September during the two weeks before school starts to provide teachers with new knowledge and enhanced skills for the upcoming school year, with an emphasis on the new math textbook adoption. Staff-development opportunities are also offered after school and by release time throughout the school year to provide in-class demonstrations as well as opportunities to understand the standards and curriculum for math content. While during the 2014-15 school year, at least five days before the school year and at least one day during the school year were dedicated to staff and professional development, we offered additional training days during the 2015-16 school year to support teachers through the implementation of new standards aligned curriculum in the area of math. Due to changes to the school calendar, only four days were able to be offered during the 2016-17 school year. Along with these in-service opportunities, one non-student day is set aside each year for staff development for all high school teachers in the district.

New teachers are provided an extensive new teacher training program. Classroom management, the district's base program, report cards, parent-teacher conferences and research-based strategy instruction are just a few of the subjects of training for new teachers.



### School Accountability Report Card

In accordance with state and federal requirements, the School Accountability Report Card (SARC) is put forth annually by all public schools as a tool for parents and interested parties to stay informed of the school's progress, test scores and achievements.

### Garden Grove Unified School District Mission Statement

To ensure student success, we will provide a rigorous and supportive academic experience that motivates all learners to meet high expectations.

### Garden Grove Unified School District Vision Statement

We are committed to preparing all students to be successful and responsible citizens who contribute and thrive in a diverse society.

### Professional Development Days

### Three-Year Data

	2014-15	2015-16	2016-17
<b>Monroe ES</b>	At least five days before the school year and one day during the school year	At least six days before the school year and three days during the school year	At least four days before the school year and one day during the school year



## CAASPP Test Results for All Students: Science (grades 5, 8 and 10)

Science test results include California Standards Tests (CSTs), California Modified Assessment (CMA) and California Alternate Performance Assessment (CAPA) in grades 5, 8 and 10. The tables show the percentage of students scoring at proficient or advanced.

Percentage of Students Scoring at Proficient or Advanced							Three-Year Data		
Subject	Monroe ES			Garden Grove USD			California		
	13-14	14-15	15-16	13-14	14-15	15-16	13-14	14-15	15-16
Science	⌘	⌘	⌘	65%	63%	62%	60%	56%	54%

## CAASPP Test Results for All Students: English Language Arts/Literacy and Mathematics (grades 3-8 and 11)

The table below shows the percentage of students meeting or exceeding the state standards in English language arts (ELA) and literacy and mathematics.

Percentage of Students Meeting or Exceeding State Standards						Two-Year Data	
Subject	Monroe ES		Garden Grove USD		California		
	14-15	15-16	14-15	15-16	14-15	15-16	
English language arts/literacy	⌘	⌘	49%	54%	44%	48%	
Mathematics	⌘	⌘	39%	45%	33%	36%	

## Parental Involvement

There are many opportunities in the district for parental involvement through participation in parent support organizations, booster clubs, school site councils and district-level advisory committees.

We are in the process of starting our Parent Teacher Association, School Site Council and English Learner Advisory Committee parent organizations.

For more information on how to become involved at the school, please contact the school, at (714) 663-6264.

## Federal Intervention Program

Schools and districts will not be newly identified for Program Improvement (PI) in the 2016-17 school year under the Every Student Succeeds Act (ESSA) that became law in December 2015, which reauthorized the Elementary and Secondary Education Act (ESEA). Schools and districts receiving Title I, Part A funding for the 2015-16 school year and were "In PI" in 2015-16 will retain their same PI status and placement year for 2016-17. Schools and districts receiving Title I, Part A funding for the 2015-16 school year and either had a status of "Not in PI" for the 2015-16 school year or did not receive Title I, Part A funding in the 2014-15 school year will have a status of "Not in PI" for the 2016-17 school year. The percentage of schools identified for Program Improvement is calculated by taking the number of schools currently in PI within the district and dividing it by the total number of Title I schools within the district.

This table displays the 2016-17 Program Improvement status for the school and district. For detailed information about PI identification, please visit [www.cde.ca.gov/ta/ac/ay/tidetermine.asp](http://www.cde.ca.gov/ta/ac/ay/tidetermine.asp).

Federal Intervention Program		2016-17 School Year
	Monroe ES	Garden Grove USD
Program Improvement status	Not Title I	In PI
First year of Program Improvement	⋄	2008-2009
Year in Program Improvement	⋄	Year 3
Number of schools currently in Program Improvement		48
Percentage of schools currently in Program Improvement		84.20%

⌘ The school first opened in the 2016-17 school year. Therefore, no data is available.

⋄ Not applicable. The school is not in Program Improvement.

## California Assessment of Student Performance and Progress (CAASPP)

For the 2015-16 school year, the CAASPP consists of several key components, including:

**California Alternate Assessment (CAA)** test includes both ELA/literacy and mathematics in grades 3-8 and 11. The CAA is given to those students with significant cognitive disabilities which prevent them from taking the Smarter Balanced Assessments with universal tools, designated supports or accommodations.

**Smarter Balanced Assessments** include ELA/literacy in grades 3-8 and 11. Smarter Balanced Assessments are designed to measure student progress toward college and career readiness.

The assessments under CAASPP show how well students are doing in relation to the state-adopted content standards. On each of these assessments, student aggregate scores are reported as achievement standards. For more information on the CAASPP assessments, please visit [www.cde.ca.gov/ta/tg/ca](http://www.cde.ca.gov/ta/tg/ca).

## Suspensions and Expulsions

This table shows the school, district, and state suspension and expulsion rates for the most recent three-year period. Note: Students are only counted one time, regardless of the number of suspensions.

Suspension and Expulsion Rates			
Garden Grove USD			
	13-14	14-15	15-16
Suspension rates	3.0%	2.2%	3.5%
Expulsion rates	0.1%	0.0%	0.1%
California			
	13-14	14-15	15-16
Suspension rates	4.4%	3.8%	3.7%
Expulsion rates	0.1%	0.1%	0.1%



## Textbooks and Instructional Materials

District K-8 textbooks in the subjects of English language arts, mathematics, history/social science, health, foreign language, visual/performing arts and science have been adopted from those approved by the State Board of Education. The Garden Grove Unified School District Board of Education has adopted district 9-12 textbooks in the subjects listed below. K-12 textbooks for mathematics, history/social science, science, English language arts (including reading), and foreign language are aligned with state-adopted content standards and state or national frameworks following the state adoption schedule. Health will be adopted at the K-6 level when the state standards have been adopted by the State Board of Education.

All GGUSD students, including all English learners, have textbooks and instructional materials, including science laboratory equipment at the 9-12 level, that are current and in good condition in accordance with Education Code requirements. All textbooks and instructional materials are provided in sufficient quantities for each student for use in class and to take home.

Textbooks and Instructional Materials List		2016-17 School Year
Subject	Most Recent State Board of Education or Local Governing Board Approved Textbooks and Instructional Materials	Adopted
Reading/language arts	Yes	2016-17
Mathematics	Yes	2015-16
Science	Yes	2007-08
History/social science	Yes	2007-08
Visual and performing arts	---	1998-99
Health (Positive Action, Life Skills)	---	2004-05

## Availability of Textbooks and Instructional Materials

The following lists the percentage of pupils who lack their own assigned textbooks and instructional materials.

Percentage of Students Lacking Materials by Subject		2015-16 School Year
Monroe ES	Percentage Lacking	
Reading/language arts	0%	
Mathematics	0%	
Science	0%	
History/social science	0%	
Visual and performing arts	0%	
Foreign language	0%	
Health	0%	

## Currency of Textbooks

This table displays the date when the most recent hearing was held to adopt a resolution on the sufficiency of instructional materials.

Currency of Textbook Data		2016-17 School Year
Data collection date	8/9/2016	

## School Leadership and School Personnel

Strong leadership is essential in a quality school and is provided at Monroe Elementary School by Cesar Loya, the principal, a professional educator for 16 years. He was appointed principal of Monroe Elementary School in 2016.

The school's leadership team is composed of the school principal and teachers. Among its responsibilities, the leadership team advises on academic and extracurricular programs.

In addition to administrators, teachers and classified staff, specially trained support personnel are also available to students. They include:

- School community liaison worker
- Vocal music teacher
- Instructional aides
- Library media technician
- Psychologist
- Speech and language pathologist
- Nurse/health assistant
- Noon duty supervisors

## School Programs

The district receives additional funds for a number of special services and programs. Currently there are no special services or programs offered at Monroe Elementary School.





### School Facility Good Repair Status

The table summarizes the findings of the most recent inspection of the school to determine the condition of the grounds, buildings, and restrooms. A form known as the Facilities Inspection Tool (FIT) is used to document whether the inspection elements listed in the table below are determined to be in "good repair" at the school. Additional information about the condition of the school's facilities may be obtained by speaking with the principal.

School Facility Good Repair Status		2016-17 School Year	
Items Inspected	Repair Status	Items Inspected	Repair Status
<b>Systems</b>	Good	<b>Restrooms/fountains</b>	Good
<b>Interior</b>	Good	<b>Safety</b>	Good
<b>Cleanliness</b>	Good	<b>Structural</b>	Good
<b>Electrical</b>	Good	<b>External</b>	Good
<b>Overall summary of facility conditions</b>			Exemplary
<b>Date of the most recent school site inspection</b>			6/26/2016
<b>Date of the most recent completion of the inspection form</b>			6/26/2016

### School Facilities

GGUSD continues to pride itself on maintaining quality facilities to provide a safe learning and working environment for its students and staff. School custodial and district maintenance staff conduct frequent inspections to ensure that all sites are clean, safe, well maintained and in good repair. Mobile cleaning teams have been used to provide in-depth cleaning-assistance services. The Maintenance Department is in the process of establishing preventative maintenance programs that ensure all schools are maintained at an efficient operating level. All classrooms, playground areas and working space for students and staff satisfy building capacity requirements of the Education Code.

The Board of Education has adopted a five-year maintenance program for the improvement of school sites, and major site-improvement projects are approved annually as needed. Graffiti-removal personnel help to keep schools free from graffiti.

The Garden Grove Unified School District has always emphasized the importance of a clean, safe environment for learning and working. The environment of each campus is a matter of pride for students, staff and parents. To ensure that our facilities are in good repair condition, custodians at each site perform monthly inspections, and the district maintenance crews attempt to complete their work orders in a timely manner. Several schools have planted individual gardens, allowed sponsored projects by both the PTA and the Eagle Scout program with the Boys Scouts of America, to enhance our campuses throughout the district.

Monroe Elementary School reopened in 2016 as a specialized school, offering a Spanish Dual Language Immersion program. The school has 20 permanent classrooms in use on the campus. The school also has a library, technology lab, multipurpose room, teacher lounge and soccer field.

In June 2010, GGUSD voters approved Measure A, authorizing \$250 million in general obligation bonds and enabling the district to qualify for as much as \$200 million in matching state school bond funds for large-scale infrastructure repair, improvement and modernization projects. As an added funding bonus, \$47 million in supplemental school-improvement grants were secured, increasing the total projected Measure A budget to \$503 million over the seven to eight years required for the completion of all bond-financed projects.

Bond proceeds, combined with state matching funds, are financing such wide-ranging school improvements as renovating electrical circuitry, plumbing, lighting, roofing, intercom and fire-safety systems; improving energy efficiency; replacing doors, windows, and outdated heating and ventilation systems; updating playground safety matting; upgrading telecommunications systems to accommodate current technology; replacing restroom plumbing, tile, and fixtures; retrofitting schools for better accessibility for the disabled; burying new underground conduits for technology growth; installing new classroom carpeting; repainting school interiors and exteriors; and new underground natural gas piping.

Modernization currently has 54 schools completed, seven underway and four remaining. Throughout the district, modernization projects are on-time and on budget. Using one-time funds over the summer air-conditioning was added to four elementary schools. With existing one-time funds, air-conditioning is included in the projects currently underway at two elementary schools and five intermediate schools. At the completion of modernization 25 elementary schools require air-conditioning. The modernization budget for these 25 schools include adding the architectural preparation component of air-conditioning work to move them closer to having A/C.

We appreciate your patience as we work to ensure that all of our schools remain successful and comfortable places to learn and work.

### School Facility Items Inspected

The tables show the results of the school's most recent inspection using the Facility Inspection Tool (FIT) or equivalent school form. The following is a list of items inspected.

- **Systems:** Gas systems and pipes, sewer, mechanical systems (heating, ventilation and air-conditioning)
- **Interior:** Interior surfaces (floors, ceilings, walls, and window casings)
- **Cleanliness:** Pest/vermin control, overall cleanliness (school grounds, buildings, rooms and common areas)
- **Electrical:** Electrical systems (interior and exterior)
- **Restrooms/fountains:** Restrooms, sinks and drinking fountains (interior and exterior)
- **Safety:** Fire safety equipment, emergency systems, hazardous materials (interior and exterior)
- **Structural:** Structural condition, roofs
- **External:** Windows/doors/gates/fences, playgrounds/school grounds





## Teacher Qualifications

This table shows information about teacher credentials and teacher qualifications. Teachers without a full credential include teachers with district and university internships, pre-internships, emergency or other permits, and waivers. For more information on teacher credentials, visit [www.ctc.ca.gov](http://www.ctc.ca.gov).

Teacher Credential Information	Three-Year Data			
	Garden Grove USD	Monroe ES		
Teachers	16-17	14-15	15-16	16-17
With a full credential	1,897	⌘	⌘	7
Without a full credential	0	⌘	⌘	0
Teaching outside subject area of competence (with full credential)	113	⌘	⌘	0

## Teacher Misassignments and Vacant Teacher Positions

This table displays the number of teacher misassignments (positions filled by teachers who lack legal authorization to teach that grade level, subject area, student group, etc.) and the number of vacant teacher positions (not filled by a single designated teacher assigned to teach the entire course at the beginning of the school year or semester). Please note that total teacher misassignments includes the number of teacher misassignments of English learners.

Teacher Misassignments and Vacant Teacher Positions	Three-Year Data		
	Monroe ES		
Teachers	14-15	15-16	16-17
Teacher misassignments of English learners	⌘	⌘	0
Total teacher misassignments	⌘	⌘	0
Vacant teacher positions	⌘	⌘	0

## Core Academic Classes Taught by Highly Qualified Teachers

High-poverty schools are defined as those schools with student eligibility of approximately 40 percent or more in the free and reduced-priced meals program. Low-poverty schools are those with student eligibility of approximately 39 percent or less in the free and reduced-priced meals program. For more information about ESEA teacher requirements, visit [www.cde.ca.gov/nclb/sr/tq](http://www.cde.ca.gov/nclb/sr/tq).

Highly Qualified Teachers	2015-16 School Year	
	Percentage of Classes in Core Academic Subjects	
	Taught by Highly Qualified Teachers	Not Taught by Highly Qualified Teachers
Monroe ES	⌘	⌘
All schools in district	94.66%	5.34%
High-poverty schools in district	94.72%	5.28%
Low-poverty schools in district	94.17%	5.83%

⌘ The school first opened in the 2016-17 school year. Therefore, no data is available.



## Academic Counselors and School Support Staff

This table displays information about academic counselors and support staff at the school and their full-time equivalent (FTE).

### Academic Counselors and School Support Staff Data

#### 2015-16 School Year

#### Academic Counselors

FTE of academic counselors	⌘
Social/behavioral or career development counselors	⌘
Library media teacher (librarian)	⌘
Library media services staff (paraprofessional)	⌘
Social worker	⌘
Health assistant	⌘
Resource specialist (nonteaching)	⌘
Psychologist <i>Available as needed</i>	
Nurse <i>Available as needed</i>	
Speech/language/hearing specialist <i>Available as needed</i>	



## Financial Data

The financial data displayed in this SARC is from the 2014-15 fiscal year. The most current fiscal information available provided by the state is always two years behind the current school year and one year behind most other data included in this report. For detailed information on school expenditures for all districts in California, see the California Department of Education (CDE) Current Expense of Education & Per-pupil Spending web page at [www.cde.ca.gov/ds/fd/ec](http://www.cde.ca.gov/ds/fd/ec). For information on teacher salaries for all districts in California, see the CDE Certificated Salaries & Benefits web page at [www.cde.ca.gov/ds/fd/cs](http://www.cde.ca.gov/ds/fd/cs). To look up expenditures and salaries for a specific school district, see the Ed-Data website at [www.ed-data.org](http://www.ed-data.org).

## District Financial Data

This table displays district teacher and administrative salary information and compares the figures to the state averages for districts of the same type and size based on the salary schedule. Note: The district salary data does not include benefits.

District Salary Data	2014-15 Fiscal Year	
	Garden Grove USD	Similar Sized District
Beginning teacher salary	\$53,207	\$45,092
Midrange teacher salary	\$86,117	\$71,627
Highest teacher salary	\$103,935	\$93,288
Average elementary school principal salary	\$124,460	\$115,631
Average middle school principal salary	\$131,474	\$120,915
Average high school principal salary	\$146,917	\$132,029
Superintendent salary	\$264,974	\$249,537
Teacher salaries: percentage of budget	40%	37%
Administrative salaries: percentage of budget	4%	5%

## Financial Data Comparison

This table displays the school's per-pupil expenditures from unrestricted sources and the school's average teacher salary and compares it to the district and state data.

Financial Data Comparison	2014-15 Fiscal Year	
	Expenditures Per Pupil From Unrestricted Sources	Annual Average Teacher Salary
Monroe ES	⌘	⌘
Garden Grove USD	\$6,757	\$89,105
California	\$5,677	\$75,837
School and district: percentage difference	⌘	⌘
School and California: percentage difference	⌘	⌘

⌘ The school first opened in the 2016-17 school year. Therefore, no data is available.

## School Financial Data

The following table displays the school's average teacher salary and a breakdown of the school's expenditures per pupil from unrestricted and restricted sources.

School Financial Data	
2014-15 Fiscal Year	
Total expenditures per pupil	⌘
Expenditures per pupil from restricted sources	⌘
Expenditures per pupil from unrestricted sources	⌘
Annual average teacher salary	⌘

## Expenditures Per Pupil

Supplemental/restricted expenditures come from money whose use is controlled by law or by a donor. Money that is designated for specific purposes by the district or governing board is not considered restricted. Basic/unrestricted expenditures are from money whose use, except for general guidelines, is not controlled by law or by a donor.



Data for this year's SARC was provided by the California Department of Education and school and district offices. For additional information on California schools and districts and comparisons of the school to the district, the county and the state, please visit DataQuest at <http://data1.cde.ca.gov/dataquest>. DataQuest is an online resource that provides reports for accountability, test data, enrollment, graduates, dropouts, course enrollments, staffing and data regarding English learners. Per Education Code Section 35256, each school district shall make hard copies of its annually updated report card available, upon request, on or before February 1.